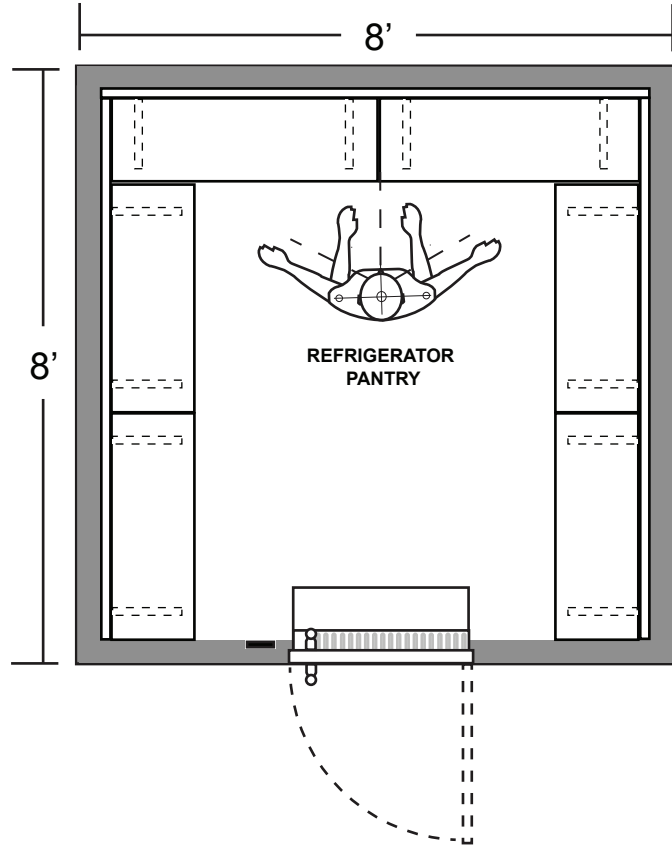


STANDARD FEATURES

- **COOLING INNOVATION With COMFORT**
Qflow360™ (patent pending) Air Walls create hyper streams of air that are virtually undetectable on the body, yet distributes cold air rapidly and evenly throughout every cubic inch of interior; for extended preservation of food. Refrigeration temperature adjustable from 34°F to 39° F, freezer temps from -2° F to -15° F.
- **REFRIGERATED AIR CURTAIN/AIR DAM**
Located above the entry and reach-in door openings and engineered to keep cold air in and warm air out (helps keep bugs out too).
- **LUXURY LED LIGHTING**
Vibrant interior lighting with scratch-resistant, white translucent, polycarbonate defusing lenses delivering optimal illumination. Customize the overall mood with LED RGB colors, controlled by the Qoldfusion smartphone app.
- **TFT TOUCH PAD & PHONE APP CONTROL**
Illuminated TFT color touchscreen with easy UI (user interface) digital control of pantry operation system. The Qoldfusion App allows full operation directly from your mobile device.
- **COMMERCIAL INSULATED PANELS**
Walls & Ceiling - 4-inch thick walls with polyurethane shot-in-place foam insulation, boasting an industry high R-Value of 48.
- **INSULATED FLOOR**
3" thick polyurethane shot-in-place foam insulated with sloped entrance for seamless transition to exterior floor. Non-slip, fungi-resistant, easy-to-clean surface.
- **ENTRANCE DOOR THRESHOLD**
Integrated, heated threshold with spillage catch trough.
- **SHELVING**
Easily-adjustable heavy gauge 304 18-8 food grade stainless steel with slots for optimal air flow.
- **CONDENSATION ELIMINATING TECHNOLOGY**
Heating network surrounds doors and viewing windows for condensation mitigation.
- **OPEN DOOR ALARM**
- **AUTO DEFROST**
- **rPOD™ REMOTE REFRIGERATION**
Moves refrigeration noise, hum, vibration & heat outside, away from living space. Certified and engineered to operate in extreme high or sub zero temperatures and can be up to 250ft+ away from the pantry. The rPOD™ can be either wall mounted, placed on a concrete pad or foundation.
All refrigerator pantries come with one (1) rPod™ and Dual-temp comes with two (2).



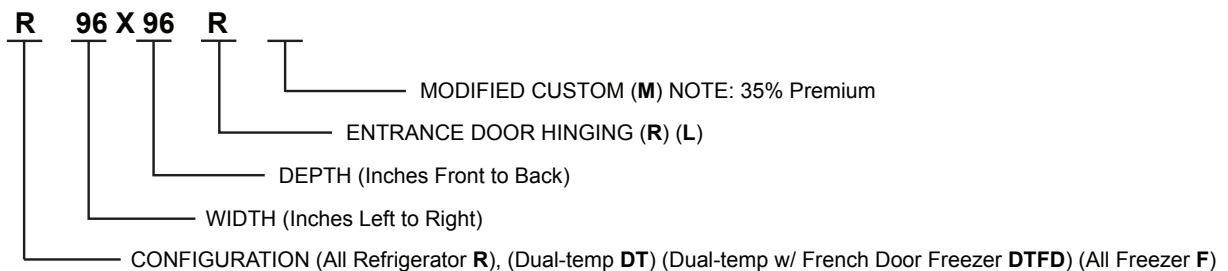
MODEL# R96X96R

Total Gross 358 cu. ft.
Net Storage: 167cu. ft.

OPTIONS:

- | | | |
|--|---|---|
| <input type="checkbox"/> Viewing Windows | <input type="checkbox"/> Powder-Coated Interior s/s Air Wall Panels | <input type="checkbox"/> Smart Sleeves™ |
| <input type="checkbox"/> Concealed Articulating Hinges | <input type="checkbox"/> Exterior Beverage Dispensing Centers | <input type="checkbox"/> Wine Storage™ |
| <input type="checkbox"/> External Reach-in Doors | <input type="checkbox"/> Internal Dry Aging Lockers | <input type="checkbox"/> Q-Note™ Music |

MODEL KEY



TO LEARN MORE ABOUT THE
WALK-IN RESIDENTIAL COLD PANTRY,
VISIT QOLDFUSION.COM